



16 CHARLES STREET

MAYFAIR W1

PRIME MAYFAIR OFFICES • 1,850 - 6,124 SQ FT AVAILABLE

16 CHARLES STREET

Description

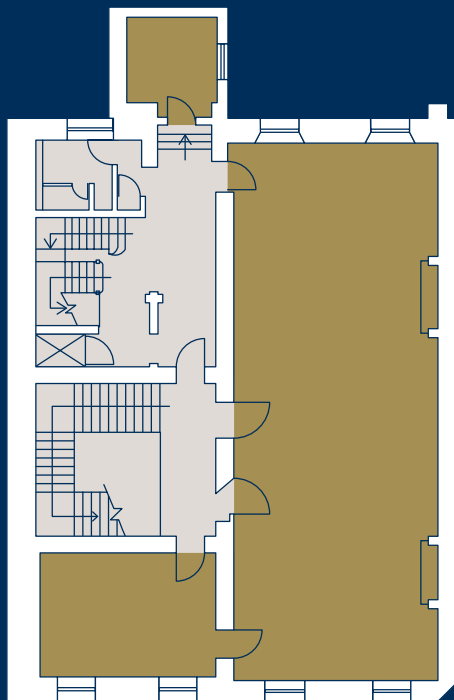
The available accommodation comprises the first floor which provides 1,850 sq ft (171.87 sq m) of fitted period offices.

The second (1,954 sq ft - 181.53 sq m) and third floors (2,320 sq ft - 215.54 sq m) are also available on a floor by floor basis or alternatively the three floors can be taken together (6,124 sq ft - 568.94 sq m).

Specification

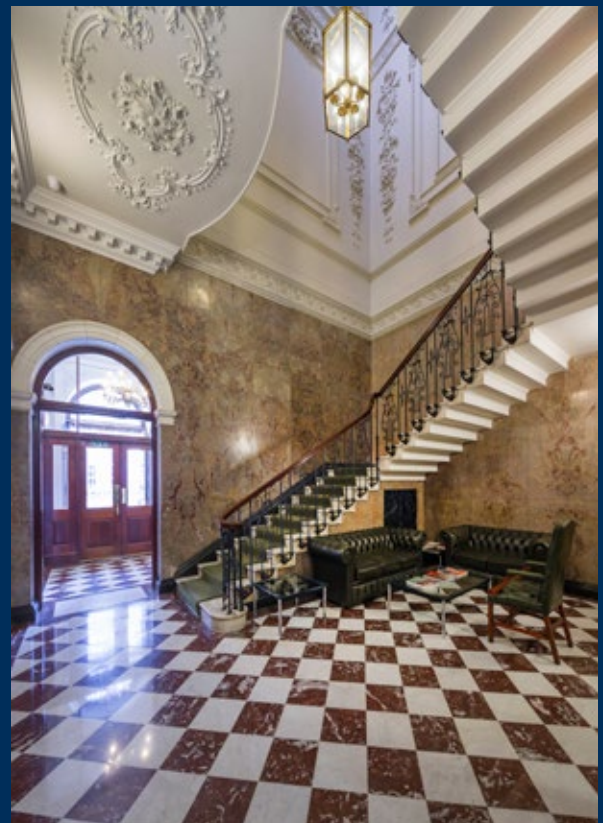
- Newly refurbished period office
- One 8-person lift
- Elegant entrance and reception
- Commissionaire
- 24 hour access
- EPC rating – D (100)
- Air-conditioning
- 5.4m clear floor to ceiling height

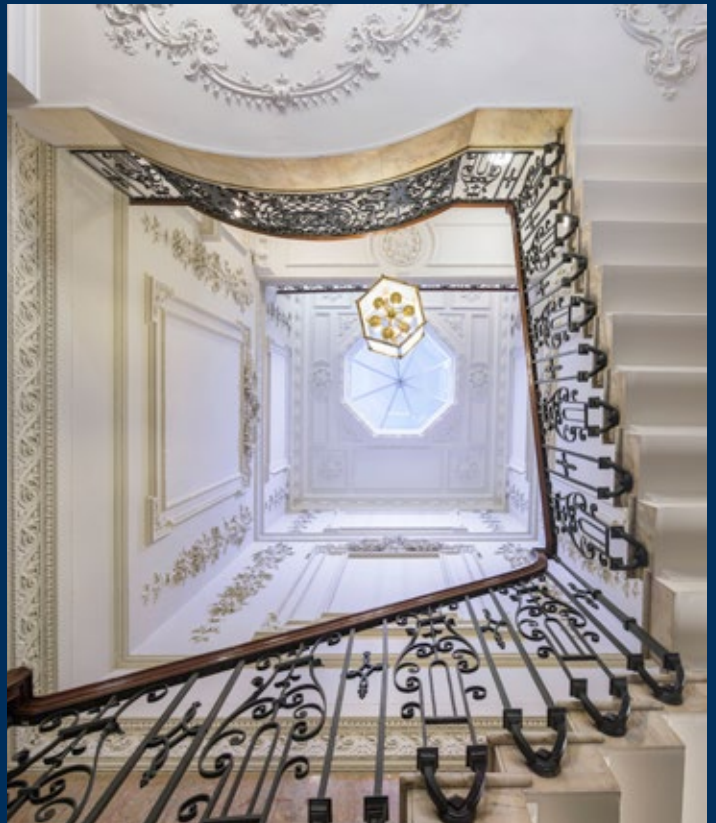
First Floor Plan



Charles Street

Floor plan not to scale, indicative only.



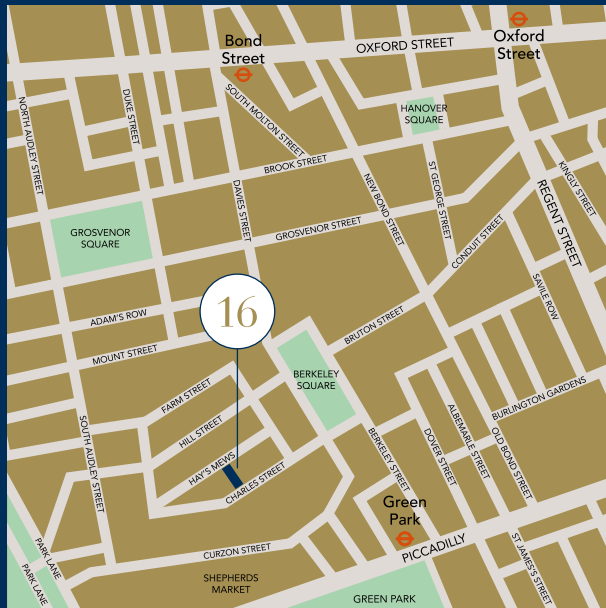


THE
BERKELEY SQUARE
ESTATE

Location

16 Charles Street is located in the heart of Mayfair on the north side of Charles Street opposite its junction with Queen Street. The area is served by a wide range of shops, restaurants, bars and hotels.

Green Park, Bond Street, and Oxford Circus Underground Stations are within easy walking distance, providing access to the Victoria, Central, Bakerloo, Jubilee, and Piccadilly lines.



Contact

For further information or to arrange an appointment to view contact:

Joe Fuller
020 7167 6401
joe@bluebooklondon.co.uk

Robbie Rowan
020 7167 6407
robbie@bluebooklondon.co.uk



Maxim Vane Percy
020 7911 2771
mvp@gva.co.uk

Alex Kirk
020 7911 2774
alex.kirk@gva.co.uk

Terms

Upon application.



Bilfinger GVA is the trading name of GVA Grimley Limited, conditions under which particulars are issued by GVA Grimley Limited or Bluebook for themselves, for any joint agents and for the vendors or lessors of this property whose agents they are, give notice that: (i) the particulars are set out as a general outline only for the guidance of intending purchasers or lessors and do not constitute, nor constitute part of, an offer or contract. (ii) all descriptions, dimensions, references to condition and necessary permission for use and occupation, and other details, are given in good faith and are believed to be correct but any intending purchasers or tenants should not rely on them as statements or representations of fact but satisfy themselves by inspection or otherwise as to the correctness of each of them. (iii) no person in the employment of GVA Grimley Limited and Bluebook or any joint agents has any authority to make or give any representation or warranty whatever in relation to this property. (iv) all rentals and prices are quoted exclusive of VAT. March 2016.